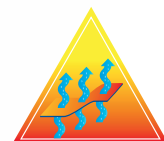




QUALITY **ART**
MODEL **225**



TROUSERS	PANTALÓN
REFERENCE	
REFERENCIA	
ART225	
COLOURS	
Navy blue	
COLORES	
Azul marino	
SIZES	
P - M - G - E	
TALLAS	
P - M - G - E	



Artik trousers ref. ART225

ART
MODEL **225**

FABRIC COMPOSITION

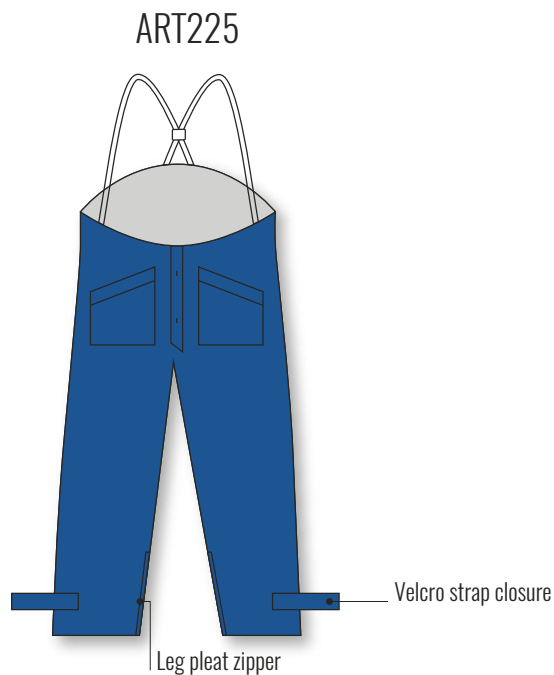
Outer coating:	35% PU, 65% PA
Lining composition:	55% PE, 45% POLIOLEFINA

PARTS

Front zipper:	1 coil zip
Leg zipper:	2 coil zips
Front fasteners:	2 PVC fastners
Velcro on pocket:	25 mm wide velcro strip
Velcro on flap:	25 mm wide velcro strip
Brace elastic:	30 mm wide black elastic band
Brace buckles:	2 buckles; 30 mm wide

DESCRIPTION

This PPE corresponds to a pair of bib and brace trousers with a high waist that rises to shoulder blade height for greater back protection. It has a zippered front closure with a placket that fastens with 2 snaps. The front has two pockets that fasten with a velcro flap. To facilitate putting them on, the lower part of the legs includes a pleat that fasten with a zipper and velcro straps for a better.



AVAILABLE COLOURS: Navy blue

AVAILABLE SIZES: P, M, G, E

STANDARDS:

This garment complies with the requirement of DIRECTIVE 89/686, EN-ISO 13688:2013, UNE-EN 342:2004, and UNE-EN343:2004 for this PPE.