

QUALITY

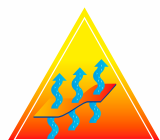
JT

MODEL

724



ANORAK	ANORAK
REFERENCE	
REFERENCIA	
JT724	
COLOURS	
Blue / Fluorescent red	
COLORES	
Azul / Rojo flúor	
SIZES	
P - M - G - E	
TALLAS	
P - M - G - E	



# Fleece anorak

ref. JT724



## FABRIC COMPOSITION

Outer coating:	100% PA
Lining composition:	100% Poliéster

## PARTS

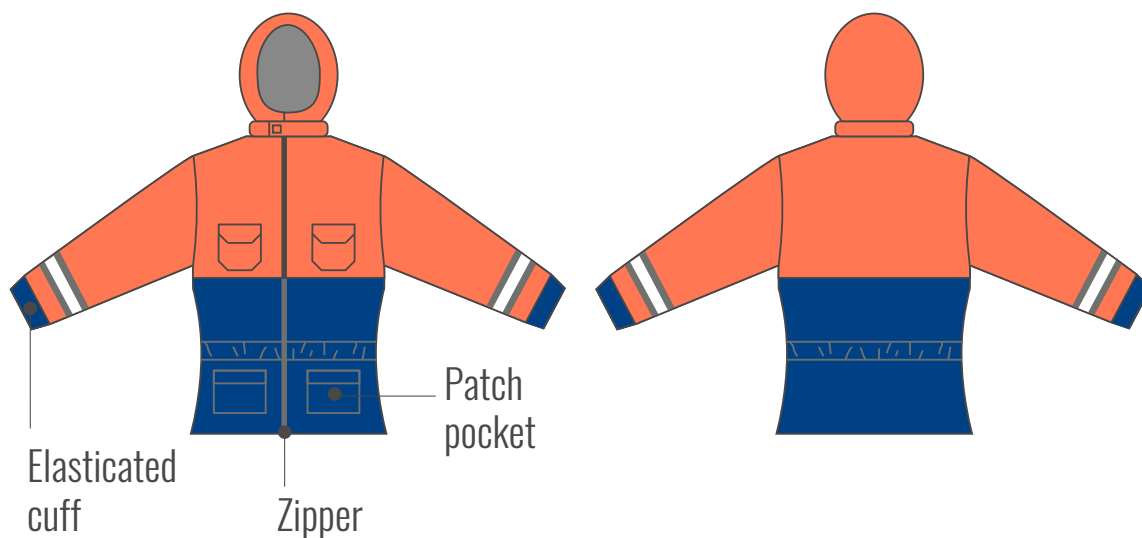
Front zipper:	1 chain zipper	Velcro collar:	25 mm wide velcro strip
Cuffs:	2 elasticated cuffs	Collar fastner:	elasticated knit strip
Elastic waistband:	30 mm wide elastic band	Reflective bands:	3M Scotchlite
Trim:	polyester bias tape	Photo-luminescent strip	

## DESCRIPTION

This PPE corresponds to a functional design bicolour fleece-lined anorak with a zippered front. The detachable hood includes an elastic knit piece that offers greater cold-weather protection.

It includes six pockets: four are located approximately around the wait area; two are open at the top and the other two, above the first, are open down the side. The other two pockets are patch pockets and are placed at chest height. The sleeves have elasticated cuffs and the waist adjusts with an elastic. The collar includes a elasticated knit strip to prevent the loss of heat. The high outer collar adjusts with velcro.

JT724



**AVAILABLE COLOURS:** Blue / fluorescent red

**AVAILABLE SIZES:** P, M, G, E

## NORMATIVA:

This garment complies with the requirement of REGULATION (EU) 2016/425, EN-ISO 13688:2013 and EN342:2017 for this PPE.