

QUALITY

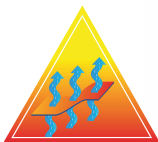
FAB

092

MODEL



VEST	CHALECO
REFERENCE	
REFERENCIA	
FAB092	
COLOURS	
Navy blue	
COLORES	
Azul marino	
SIZES	
S - M - L - XL - XXL	
TALLAS	
S - M - L - XL - XXL	



Vest with detachable sleeves ref. FAB092



FABRIC COMPOSITION

Fabric composition: 100% PE

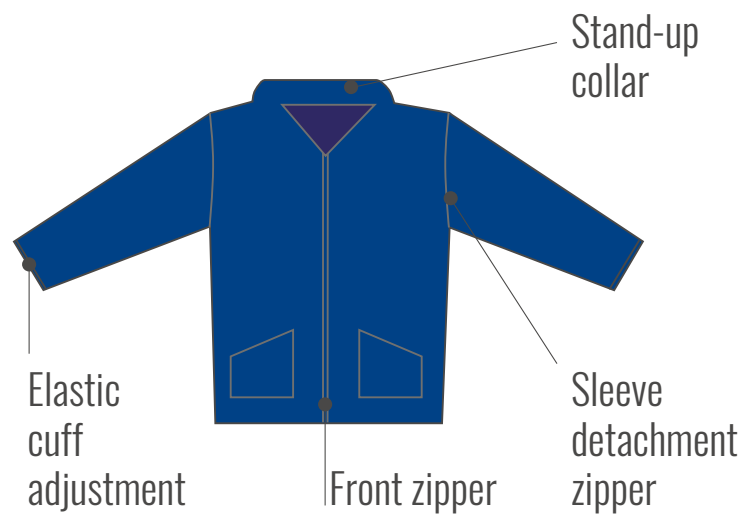
PARTS

Front zipper: 1 reversible zip
Cuff band: 30 mm wide white elastic band

DESCRIPTION

This PPE corresponds to a quilted vest that can be attached to other jackets by means of a 2-way zipper that also function as the front fastening of the vest. It has detachable sleeves with elasticated knit cuffs and attach to the vest by means of zippers. It includes two patch pockets at waist height. It has a stand up-collar. The bottom of the garment has a velcro-fastened strip on each side. The entire garment is trimmed with polyester.

FAB092



AVAILABLE COLOURS: Navy blue

AVAILABLE SIZES: S, M, L, XL, XXL

STANDARDS:

This garment complies with the requirement of REGULATION (EU) 2016/425, EN-ISO 13688:2013 and EN 14058:2017 for this PPE.