

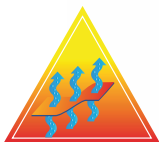
QUALITY

WT

MODEL 0075



JACKET	CAZADORA
REFERENCE	
REFERENCIA	
WT0075	
COLOURS	
Navy blue	
COLORES	
Azul marino	
SIZES	
S - M - L - XL - XXL	
TALLAS	
S - M - L - XL - XXL	



Jacket

ref. WT0075



FABRIC COMPOSITION

Composición tejido exterior: 100% PE
Composición forro: 100% PE

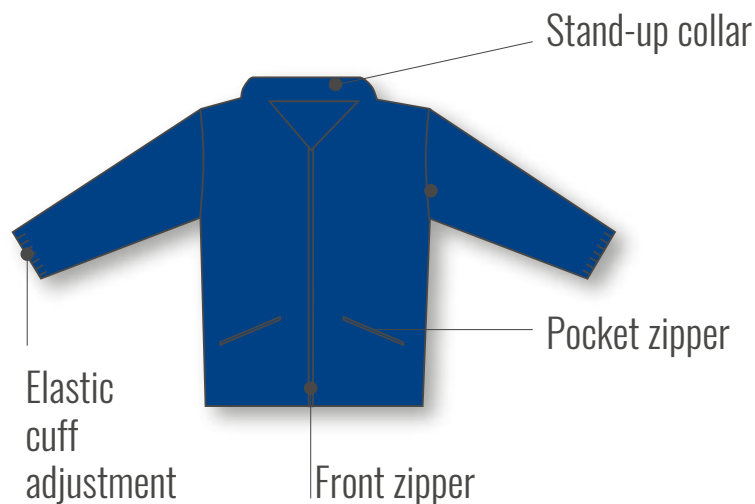
PARTS

Front zipper: 2 two-way coil zips
Pocket zipper: 2 coil zips
Cuff bands: 30 mm wide white elastic band
Leg bottom adjustment: cotton cord
Toggles: 2
End caps: 2

DESCRIPTION

This PPE corresponds to a bomber style jacket that fastens down the front with a 2-way zipper. It has two reach-through pockets on the front that fasten with a zipper, and an adjustable waist by means of an elastic casing. The sleeves have elasticated knit cuffs.
This PPE can be attached to the slickers from the series I20, UMIF, PLF etc., by means of a 2-way zipper.

WT0075



AVAILABLE COLOURS: Navy blue

AVAILABLE SIZES: S, M, L, XL, XXL

STANDARDS:

This garment complies with the requirement of REGULATION (EU) 2016/425, EN-ISO 13688:2013 and EN 14058:2017 for this PPE.